



IXI

ABSOLUTE
CONTROL

SMART TRAILER AND
FLOW BACK

Benefits of the Smart Trailer System

- ▶ The Smart Trailer system is intended to provide a safer solution to well servicing operations in a cost effective, innovative manner.
- ▶ From the perspective of the service company the trailer allows for documentation of job steps as well as increased safety of personnel.
- ▶ For the Consultants it provides the peace of mind of a safer work environment as well as end of job data via thumb drive
- ▶ As for the hands on the ground the smart trailers continuous monitoring of tank levels, pressure read outs and choke status reduces stress associated with multiple strapping and allows for focus on the overall job at hand

Control Panel

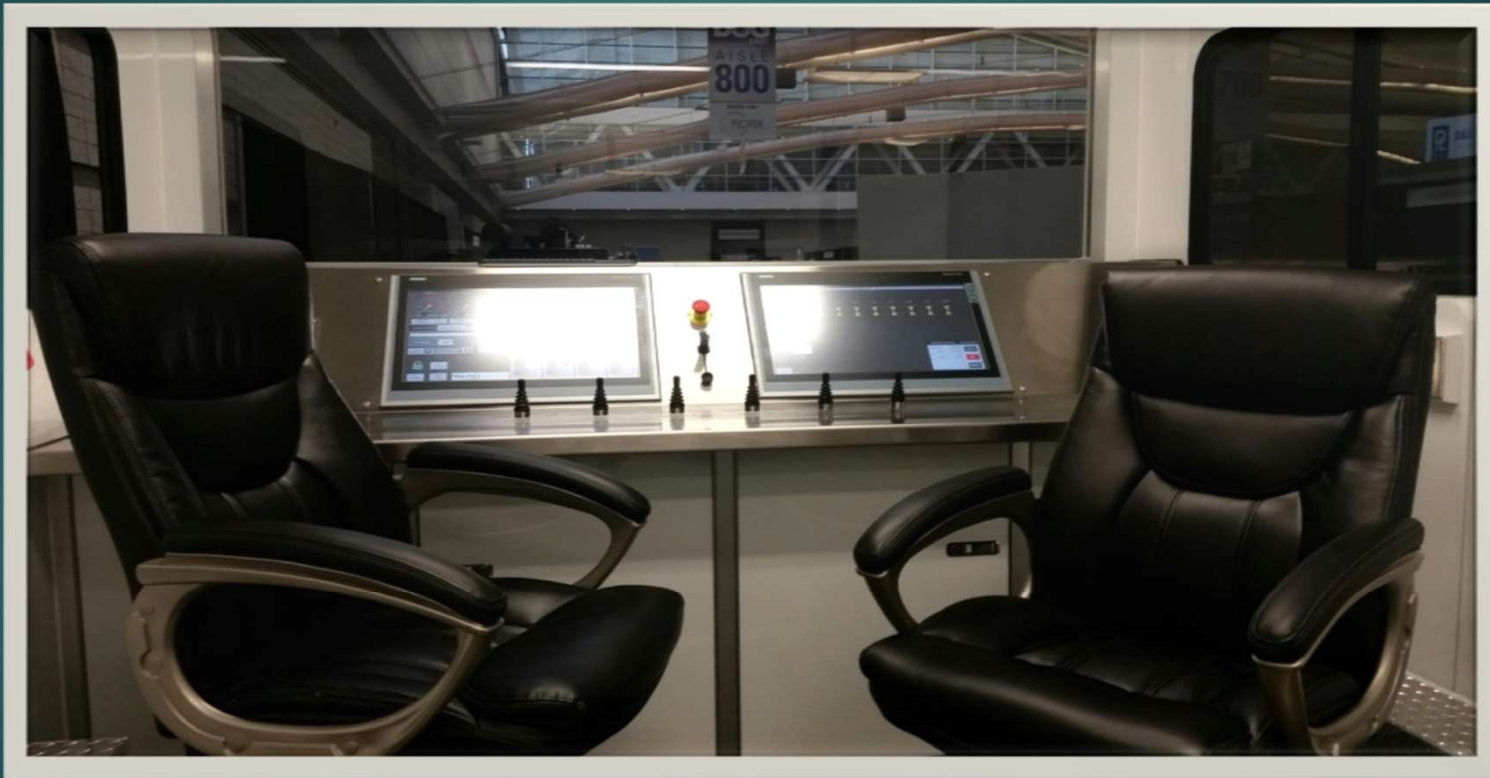
- ▶ The control panel truly brings flowback, well testing, and safety up to date with current technology. The systems allows for lighter trailers, less clutter, and an ease of use which frees the operator to focus on the overall job at hand.
- ▶ With the ever changing production procedures, the smart trailer adapts to all job scopes and allows for simple rig up and use in a manner that is easy to follow



|X| ABSOLUTE
CONTROL



Smart Trailer Control Panel



|X| ABSOLUTE
CONTROL



Hybrid Trailer Control Panel



|X| ABSOLUTE
CONTROL



Smart Screen

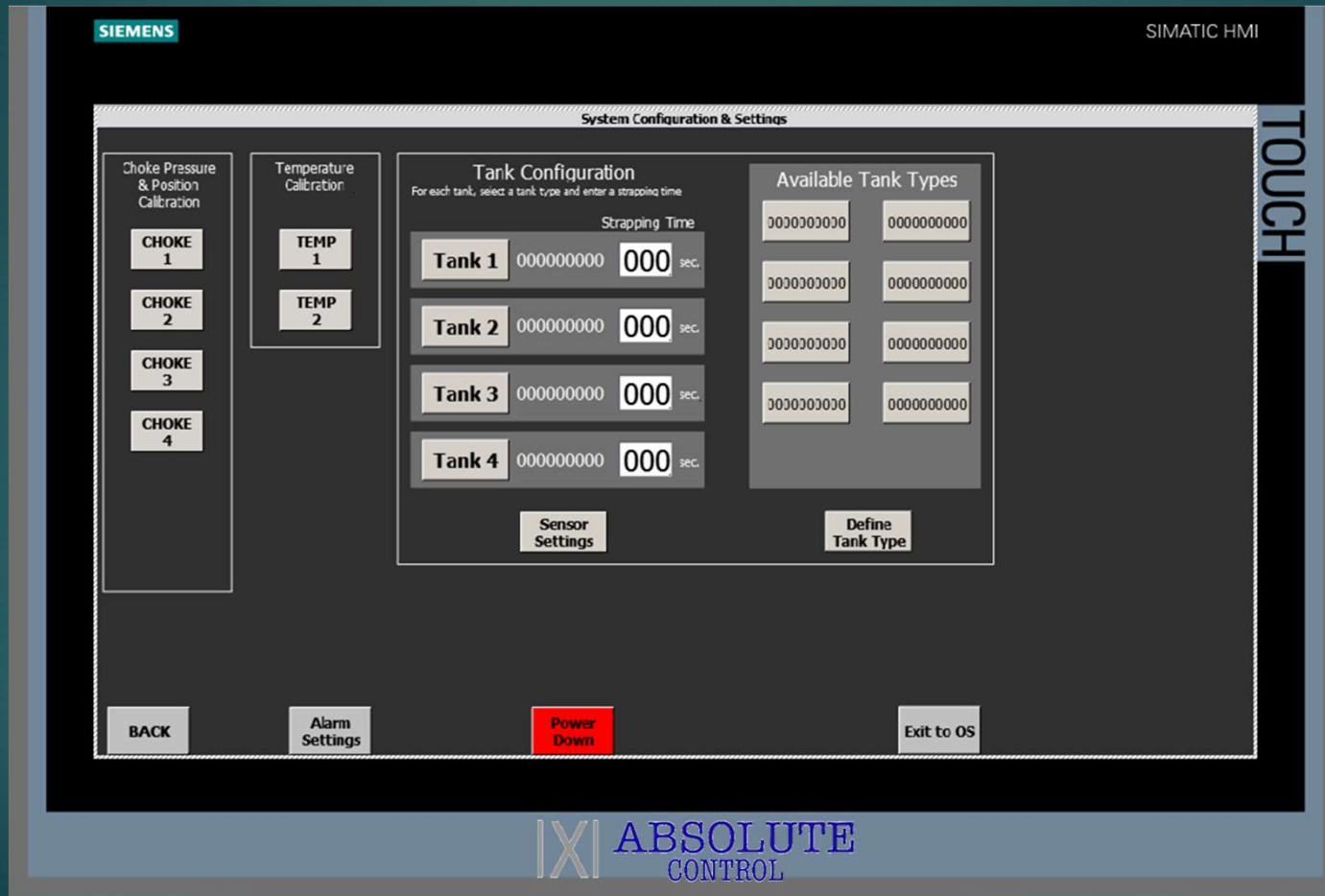
- ▶ The easy to read smart screen display puts all the essential data in one location allowing for on the spot adjustments
- ▶ The reliability of the guided wave radar tank level indicators reduce the risk of over flow, ongoing flow rate monitoring, total fluid on surface and less time exposed to gas and the possibility of flash fire on the tank.
- ▶ With built in redundancies, such as- dual touch screens, back up battery, dual motors with auto start and others to account for power and hydraulic loss, this command center is designed to function above and beyond any others in a user friendly format.
- ▶ The system also allows for an end of job profile to be downloaded to a thumb drive for records
- ▶ We also offer wireless options for monitoring of all data through local WiFi , allowing for onsite personnel to log in and remotely stream incoming data to a tablet, and can also incorporate cellular feed to allow offsite viewing of current well conditions.
- ▶ We offer monitoring of all types of data, from pressure, flow rate, temperature, gasses, onsite personnel, and equipment through rfid.



Smart Trailer Touch Screen



Defining Tanks For Monitoring



Open top tanks

SIEMENS SIMATIC HMI

Visualization TOUCH

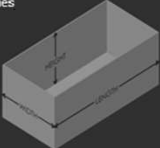
TANK DEFINITION

Enter tank dimensions in inches

Length:

Width:

Height:



Assign a label to associate with the tank to be defined

<input type="text" value="0000000000"/>	<input type="text" value="0000000000"/>
<input type="text" value="0000000000"/>	<input type="text" value="0000000000"/>
<input type="text" value="0000000000"/>	<input type="text" value="0000000000"/>
<input type="text" value="0000000000"/>	<input type="text" value="0000000000"/>

DEFINE TANK BY:

Tank Label

Tanks with strap chart

SIEMENS SIMATIC HMI

TOUCH

Strapping List Entry

Level (in.)	Barrels	Level (in.)	Barrels	Level (in.)	Barrels	Level (in.)	Barrels	Level (in.)	Barrels	Level (in.)	Barrels	Level (in.)	Barrels
1 000.0		16 000.0		31 000.0		46 000.0		61 000.0		76 000.0		91 000.0	
2 000.0		17 000.0		32 000.0		47 000.0		62 000.0		77 000.0		92 000.0	107 000.0
3 000.0		18 000.0		33 000.0		48 000.0		63 000.0		78 000.0		93 000.0	108 000.0
4 000.0		19 000.0		34 000.0		49 000.0		64 000.0		79 000.0		94 000.0	109 000.0
5 000.0		20 000.0		35 000.0		50 000.0		65 000.0		80 000.0		95 000.0	110 000.0
6 000.0		21 000.0		36 000.0		51 000.0		66 000.0		81 000.0		96 000.0	111 000.0
7 000.0		22 000.0		37 000.0		52 000.0		67 000.0		82 000.0		97 000.0	112 000.0
8 000.0		23 000.0		38 000.0		53 000.0		68 000.0		83 000.0		98 000.0	113 000.0
9 000.0		24 000.0		39 000.0		54 000.0		69 000.0		84 000.0		99 000.0	114 000.0
10 000.0		25 000.0		40 000.0		55 000.0		70 000.0		85 000.0		100 000.0	115 000.0
11 000.0		26 000.0		41 000.0		56 000.0		71 000.0		86 000.0		101 000.0	116 000.0
12 000.0		27 000.0		42 000.0		57 000.0		72 000.0		87 000.0		102 000.0	117 000.0
13 000.0		28 000.0		43 000.0		58 000.0		73 000.0		88 000.0		103 000.0	118 000.0
14 000.0		29 000.0		44 000.0		59 000.0		74 000.0		89 000.0		104 000.0	119 000.0
15 000.0		30 000.0		45 000.0		60 000.0		75 000.0		90 000.0		105 000.0	120 000.0

LEVEL (in)
00000
BARRELS
000.000
Enter

BACK

IXI ABSOLUTE CONTROL



Sample end of job log

	A	B	C	D	E	F	G	H	I	J	K	L	M	N	O	P	Q	R	S	T
1	Date	Time	Pressure 1	Position 1	Pressure 2	Position 2	Pressure 3	Position 3	Pressure 4	Pressure 5	Position 5	Pressure 6	Position 6	Temp 1	Temp 2	Level 1	Level 2	Level 3	Level 4	Comment
2	6/1/2015	4:49:04 PM	102	-12	57	-13	109	-25	57	0	0	0	0	-100	-100	-26.9951	-26.9756	-26.9951	-26.4713	
3	6/1/2015	5:12:07 PM	103	-12	57	-13	127	-25	57	0	0	0	0	-100	-100	-26.9951	-26.9756	-26.9951	-26.4713	
4	6/1/2015	5:12:17 PM	96	-12	61	-13	123	-25	61	0	0	0	0	-100	-100	-26.9951	-26.9756	-26.9951	-26.4713	
5	6/1/2015	5:12:27 PM	102	-12	61	-13	122	-25	61	-3750	-25	-3750	0	-100	-100	-26.9951	-26.9756	-26.9951	-26.4713	
6	6/1/2015	5:12:37 PM	102	-12	60	-13	122	-25	60	0	0	0	0	-100	-100	-26.9951	-26.9756	-26.9951	-26.4713	
7	6/1/2015	5:12:47 PM	98	-12	59	-13	120	-25	59	0	0	0	0	-100	-100	-26.9951	-26.9756	-26.9951	-26.4713	
8	6/1/2015	5:12:57 PM	97	-12	59	-13	118	-25	59	0	0	0	0	-100	-100	-26.9951	-26.9756	-26.9951	-26.4713	
9	6/1/2015	5:13:07 PM	97	-12	57	-13	119	-25	57	0	0	0	0	-100	-100	-26.9951	-26.9756	-26.9951	-26.4713	
10	6/1/2015	5:13:17 PM	102	-12	59	-13	118	-25	59	0	0	0	0	-100	-100	-26.9951	-26.9756	-26.9951	-26.4713	TEST3
11	6/1/2015	5:13:27 PM	103	-12	58	-13	120	-25	58	0	0	0	0	-100	-100	-26.9951	-26.9756	-26.9951	-26.4713	
12	6/1/2015	5:13:37 PM	106	-12	55	-13	119	-25	55	0	0	0	0	-100	-100	-26.9951	-26.9756	-26.9951	-26.4713	
13	6/1/2015	5:13:47 PM	101	-12	52	-13	116	-25	52	0	0	0	0	-100	-100	-26.9951	-26.9756	-26.9951	-26.4713	
14	6/1/2015	5:13:57 PM	103	-12	55	-13	121	-25	55	0	0	0	0	-100	-100	-26.9951	-26.9756	-26.9951	-26.4713	
15	6/1/2015	5:14:07 PM	99	-12	56	-13	114	-25	56	0	0	0	0	-100	-100	-26.9951	-26.9756	-26.9951	-26.4713	
16	6/1/2015	5:14:17 PM	103	-12	55	-13	118	-25	55	0	0	0	0	-100	-100	-26.9951	-26.9756	-26.9951	-26.4713	
17	6/1/2015	5:14:27 PM	105	-12	55	-13	118	-25	55	0	0	0	0	-100	-100	-26.9951	-26.9756	-26.9951	-26.4713	
18	6/1/2015	5:14:37 PM	105	-12	54	-13	122	-25	54	0	0	0	0	-100	-100	-26.9951	-26.9756	-26.9951	-26.4713	
19	6/1/2015	5:14:47 PM	109	-12	49	-13	119	-25	49	0	0	0	0	-100	-100	-26.9951	-26.9756	-26.9951	-26.4713	hhhhhhh
20	6/1/2015	5:14:57 PM	106	-12	52	-13	119	-25	52	-3750	-25	-3750	0	-100	-100	-26.9951	-26.9756	-26.9951	-26.4713	
21	6/1/2015	5:15:07 PM	103	-12	59	-13	126	-25	59	0	0	0	0	-100	-100	-26.9951	-26.9756	-26.9951	-26.4713	

Flowrate sensors (available as a standalone unit)

- ▶ Designed for installation on open or closed top frac tanks
- ▶ Monitor return flowrate, fluid levels and volumes during plug drillout, well flowback and other operations
- ▶ Display & Control Cabinet with 12" Touchscreen HMI
- ▶ Display Cabinet is designed for non-hazardous area use and consists of a PLC and HMI
- ▶ Tank level, volume and flowrate data is displayed on the touch screen HMI.
- ▶ Configuration screen for input of tank dimensional data and user settable alarms
- ▶ Up to 4 guided wave radar level sensors
- ▶ Sensors are certified for use in Class 1, Division 1 hazardous areas and installed in each tank to be monitored
- ▶ 100' weather proof cables connect the display cabinet to each level sensor



Additional Sensor options



- Pressure
- Temperature
 - Gas
- Scanner 2000
- Total Flow
- etc



|X| ABSOLUTE
CONTROL



Command Center Bulkhead



|X| ABSOLUTE
CONTROL



Smart Trailer Pre-fab



|X| ABSOLUTE
CONTROL



- ▶ Absolute Control is committed to the success of our clients and through them, the customers they serve.
- ▶ In an ever changing economy those companies that are willing to lead the way in technological advances as well as providing a safer more reliable work environment are the ones that are not only going to be able to survive but thrive.
- ▶ We also offer an unlimited variety of this command center for any number of operations based on specific needs.
- ▶ Water Transfer
- ▶ Well Testing
- ▶ Safety Trailer
- ▶ As well as Choke Control Panels, Stand alone Data Acquisition systems, Refinery and Plant Safety Command Centers, Tank Battery Monitoring, etc....

